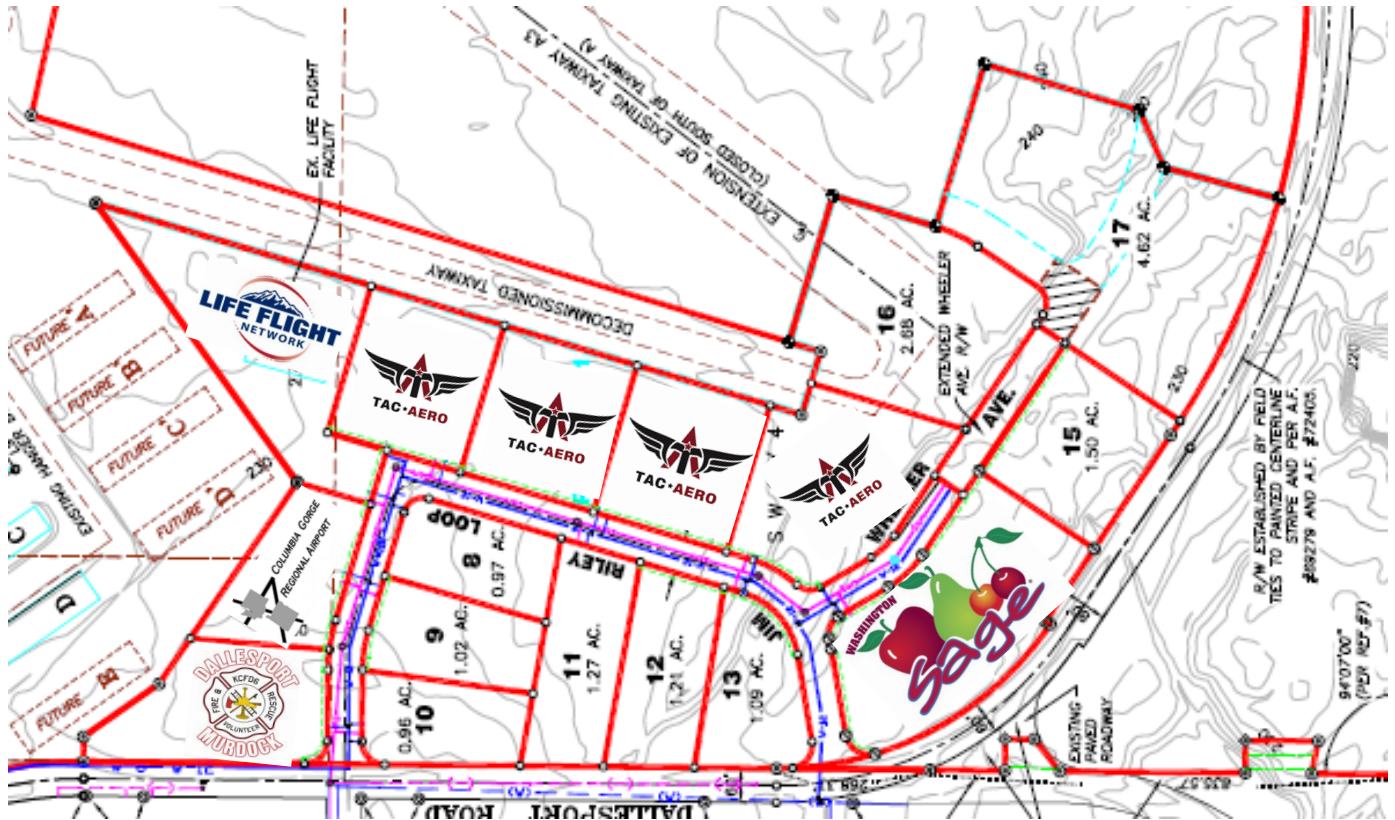


# Columbia Gorge Regional Airport Business Park



## Development Information

**Building(s):** Construction Ready Sites

**Utilities:** Water - Dallesport Water District

**Financial:**

Sewer - Klickitat PUD

Land Lease Air side (\$0.20 per sq. ft annually)

Electric - Klickitat PUD

Land Lease Bus. Park (\$0.30 per sq. ft annually)

Telephone - Spectrum & Gorge Net

**Site Information:** Zoning Airport Industrial

## Jeff Renard - Airport Manager



COLUMBIA GORGE  
REGIONAL AIRPORT

(509) 767-2272  
manager@flycgra.com

45 Airport Way / P.O. Box 285  
Dallesport, WA 98617

# Airport Information - KDLS



CTAF - 123.00 ASOS - 135.17

Runway 13-31 : 5,097 x 100 FT (ASPH)

Runway 7-25: 4,647 x 100 FT (ASPH)

RNAV Runway 31 LDA Runway 25

COPTER LDA Runway 25

## Pilot Services

FBO: TacAero (509) - 767 - 0005

100LL, JET A1 (Self Serve Available)

Maintenance Shop Flight Training

Tie Down Parking Courtesy Car

## Regional Services

Life Flight Ambulance Station

*Located in beautiful Dallesport, WA the Columbia Gorge Regional Airport has a long and rich aviation history. The original airport, known as Case Field was constructed in the 1920s as a grass strip. Today's airfield was constructed in 1942 by the U.S.*

*Corps of Engineers as a WWII training facility. In 2002 The City of The Dalles, OR and Klickitat County, WA entered into a partnership to co-sponsor the airport. This partnership has resulted in numerous multi-million dollar projects focused on improving airport safety and infrastructure. Today the CGRA serves as a gateway to the Mid-Columbia River Gorge with unparalleled opportunity for work and play!*

